

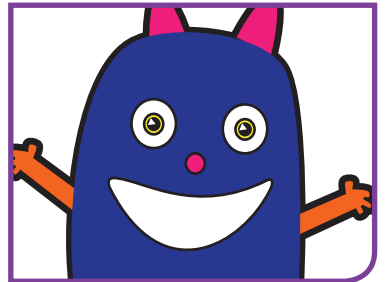
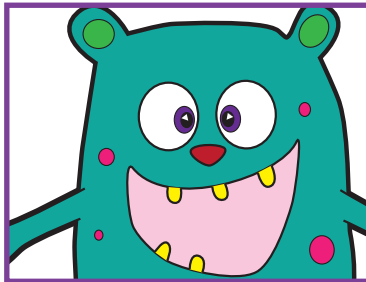
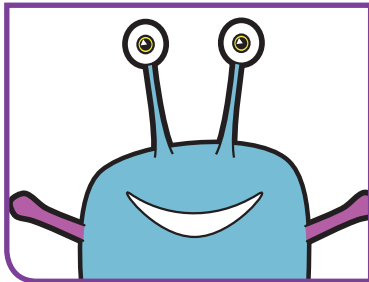
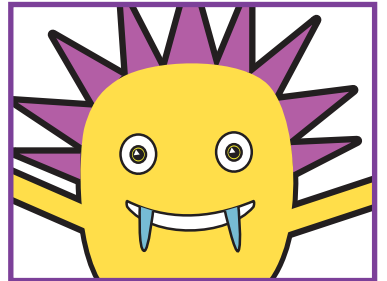
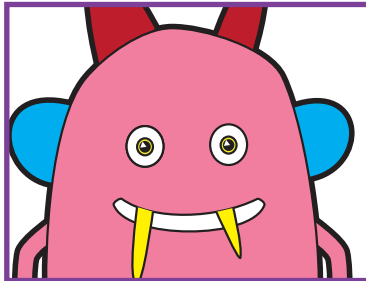
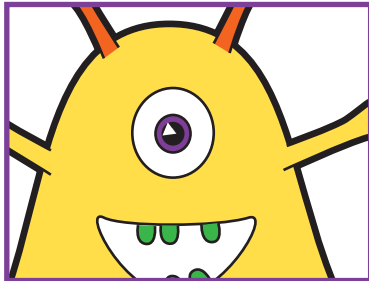
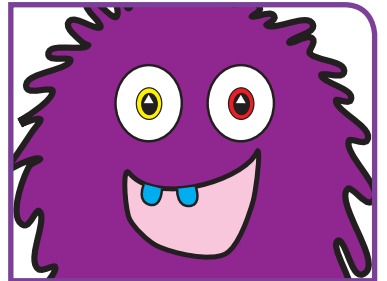
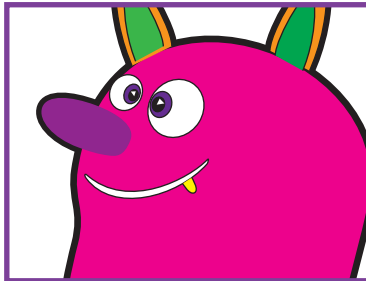
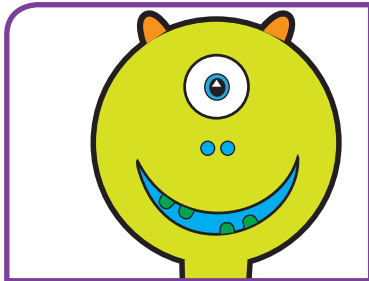
Ph

KEY STAGE
1

Phonics

Phonics screening check

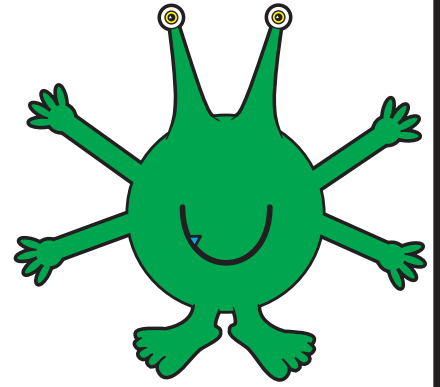
Pupils' materials



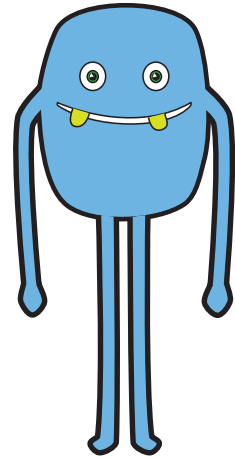
National curriculum assessments

JUNE 2015

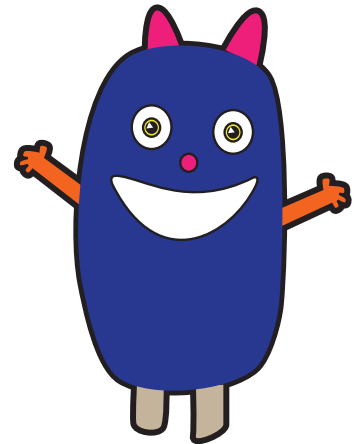
fip



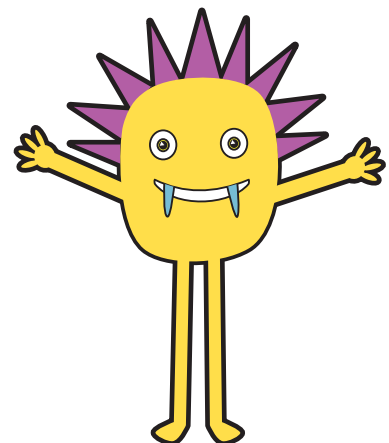
pon



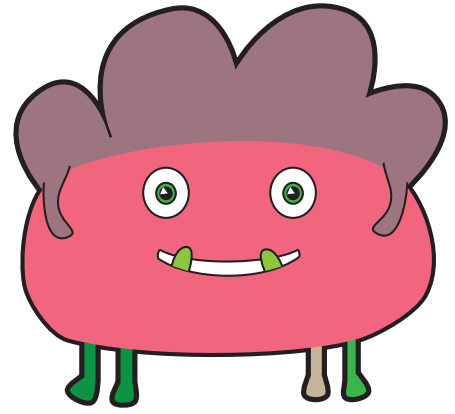
hab



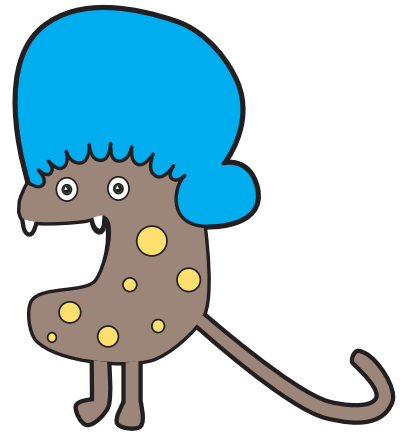
ulb



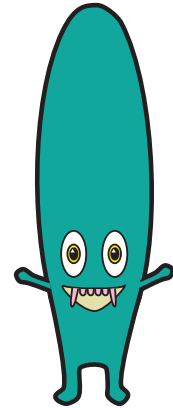
dack



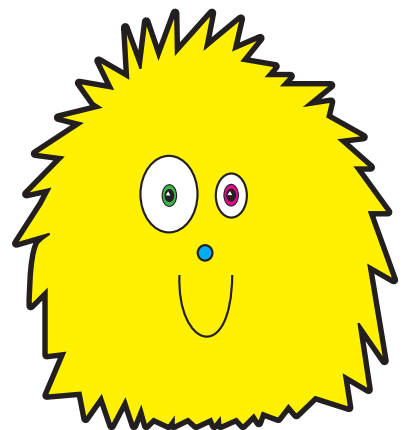
chob



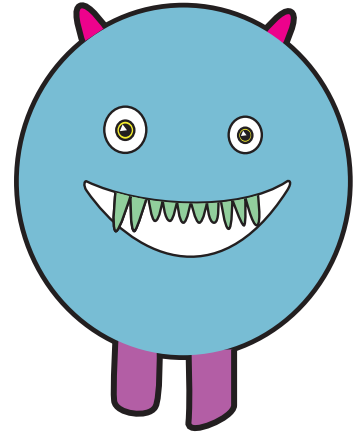
nurt



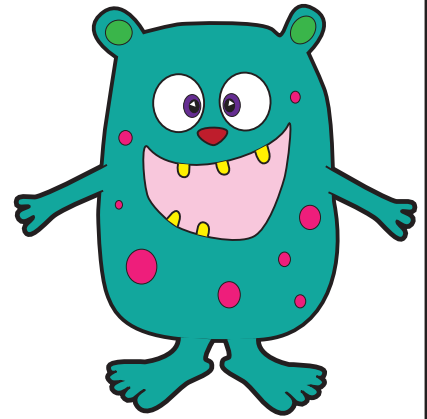
queet



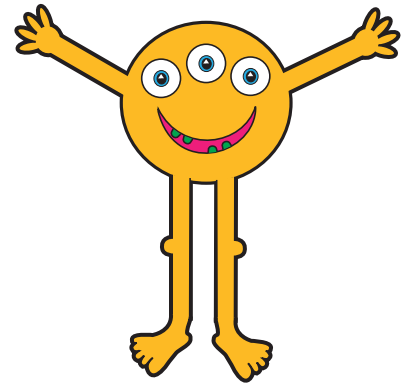
plap



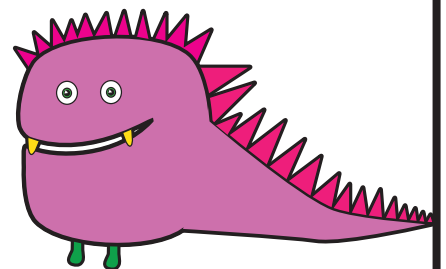
froin



melp



heent



shed

long

soil

chart

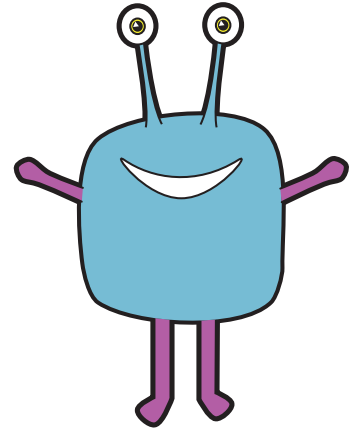
crab

fresh

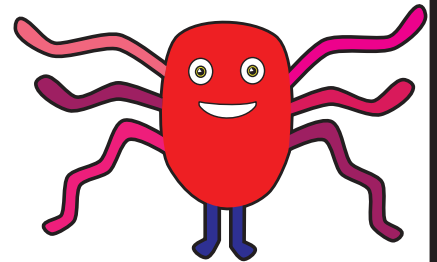
wink

shuts

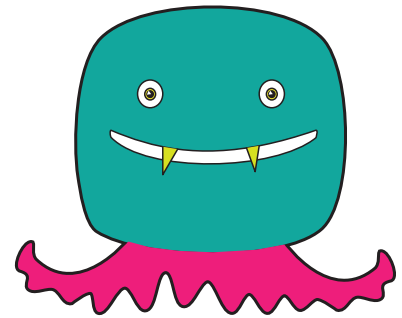
yair



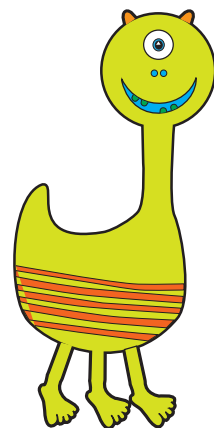
blies



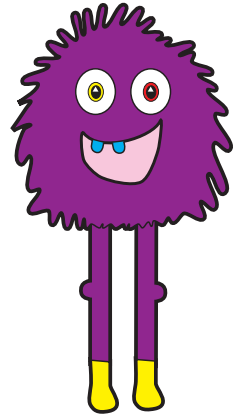
keam



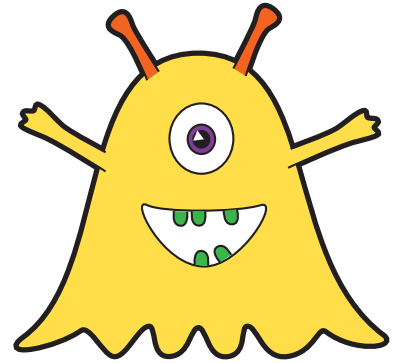
whape



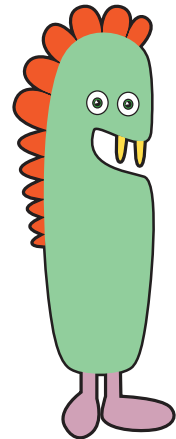
braft



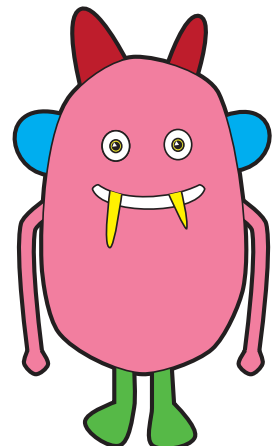
thrant



sprop



strow



law

glued

zoom

rice

grand

cloaks

scrap

strike

river

diving

beehive

midnight



Standards
& Testing
Agency

2015 Key Stage 1 Phonics screening check: pupils' materials

Print version product code: STA/15/7231/p ISBN: 978-1-78315-433-3

Electronic PDF version product code: STA/15/7231/e ISBN: 978-1-78315-460-9

For more copies

Additional printed copies of this booklet are not available. It can be downloaded from www.gov.uk/government/publications.

© Crown copyright and Crown information 2015

Re-use of Crown copyright and Crown information in test materials

Subject to the exceptions listed below, the test materials on this website are Crown copyright or Crown information and you may re-use them (not including logos) free of charge in any format or medium in accordance with the terms of the Open Government Licence v3.0 which can be found on the National Archives website and accessed via the following link: www.nationalarchives.gov.uk/doc/open-government-licence.

When you use this information under the Open Government Licence v3.0, you should include the following attribution: "Contains public sector information licensed under the Open Government Licence v3.0" and where possible provide a link to the licence.



Exceptions - third party copyright content in test materials

You must obtain permission from the relevant copyright owners, as listed in the '2015 key stage 2 test materials copyright report', for re-use of any third party copyright content which we have identified in the test materials, as listed below. Alternatively you should remove the unlicensed third party copyright content and/or replace it with appropriately licensed material.

Third party content

These materials contain no third party copyright content.

If you have any queries regarding these test materials contact the national curriculum assessments helpline on 0300 303 3013 or email assessments@education.gov.uk.